

# MAXPUMP

*Designed for elite athletes*



# GENERAL CATALOGUE



# Maxpump

ENGINEERED IN USA

Established in 2019 and engineered in the USA

MAXPUMP is committed to crafting professional training equipment tailored for elite athletes. Collaborating with top-notch professionals and institutions worldwide, we continuously innovate, creating unique and scientifically patented products, aiming for perfection in every product.



**Innovative design**  
**Premium quality**  
**Timely delivery**  
**Customizable options**





THE  
EAST  
COAST  
HARDCORE  
BODY  
BUILDING  
MECCA

GYM  
BY TRAINING

MAXPLUS



# General Catalogue

# MAXPUMP CATALOGUE

<b>STRENGTH</b>	<b>01</b>
▪ <i>Evolution</i>	<i>01</i>
▪ <i>P-loaded</i>	<i>03</i>
▪ <i>Elite</i>	<i>09</i>
▪ <i>Bench&amp;Racks</i>	<i>13</i>
▪ <i>GluteMax</i>	<i>19</i>

<b>CONTACT</b>	<b>33</b>
----------------	-----------



# STRENGTH EVOLUTION

The Evolution series adhere to biomechanics principles, utilize patented technology to create innovative superset training equipment. Grounded in scientific biomechanics, our focus is to maximize user efficiency and minimize tendon pressure, preventing exercise-related injuries.

Combining specialized angles from ergonomic principles, we aim to achieve peak muscle fiber output in the shortest time.

Unlock Your Elite Potential





**HORIZONTAL MULTI LEG PRESS**

A7024 LOWER BODY



**▲ DIMENSIONS** **▣ STACK**  
 1850\*1110\*1650(MM) MAX 150(KG)  
 6.1\*3.6\*5.4(INCH) MAX 331(LB)

MACHINE FOR TRAINING GLUTEUS, QUADRICEPS, BICEPS

**DECLINE CHEST PRESS & PEC DEC SUPERSET**

A7021 UPPER BODY



**▲ DIMENSIONS** **▣ STACK**  
 906.3\*1730\*2103(MM) MAX 125(KG)  
 2.97\*5.67\*6.9(INCH) MAX 276(LB)

MACHINE FOR TRAINING PECTORALIS

**SEATED LATERAL RAISE & PRESS SUPERSET**

A7020 UPPER BODY



**▲ DIMENSIONS** **▣ STACK**  
 1290\*950\*1730(MM) MAX 125(KG)  
 4.23\*3.12\*5.67(INCH) MAX 276(LB)

MACHINE FOR TRAINING DELTOIDS

**STANDING MULTI ROTARY ARMS CURL**

A7039 LOWER BODY



**▲ DIMENSIONS** **▣ STACK**  
 1060\*1070\*176(MM) MAX 125(KG)  
 3.5\*3.5\*5.8(INCH) MAX 276(LB)

MACHINE FOR TRAINING BICEPS AND TRICEPS

**SEATED SUPER DUAL PULLDOWN**

A7035 UPPER BODY



**▲ DIMENSIONS** **▣ STACK**  
 1740\*1020\*250(MM) MAX 200(KG)  
 5.7\*3.3\*8.2(INCH) MAX 441(LB)

MACHINE FOR TRAINING BACK, DELTOIDS, ARMS

**MULTI DOUBLE BACK SUPERSET**

A7032 UPPER BODY



**▲ DIMENSIONS** **▣ STACK**  
 1760\*940\*2430(MM) MAX 125(KG)  
 5.8\*3.08\*8(INCH) MAX 276(LB)

MACHINE FOR TRAINING BACK

**SEATED ISO MULTI BICEPS CURL**

A7019 UPPER BODY



**▲ DIMENSIONS** **▣ STACK**  
 1270\*1740\*1410(MM) MAX 100(KG)  
 4.16\*5.7\*4.82(INCH) MAX 220(LB)

MACHINE FOR TRAINING BICEPS

**TRICEP OVERHEAD EXTENSION & DIP SUPERSET**

A7031 UPPER BODY



**▲ DIMENSIONS** **▣ STACK**  
 1630\*1200\*1625(MM) MAX 100(KG)  
 5.35\*3.9\*5.33(INCH) MAX 220(LB)

MACHINE FOR TRAINING TRICEPS

**STANDING LATERAL RAISE & FLY**

A7003 UPPER BODY



**▲ DIMENSIONS** **▣ STACK**  
 1450\*950\*204(MM) MAX 125(KG)  
 4.75\*3.12\*6.7(INCH) MAX 276(LB)

MACHINE FOR TRAINING DELTOIDS AND PECTORALIS

**STANDING ISO MULTI LEG CURL**

A7054 LOWER BODY



**▲ DIMENSIONS** **▣ STACK**  
 1040\*909\*1834(MM) MAX 125(KG)  
 3.4\*2.9\*6(INCH) MAX 276(LB)

MACHINE FOR TRAINING HAMSTRINGS

**CLASSIC POWER LEG EXTENSION**

A7064 LOWER BODY



**▲ DIMENSIONS** **▣ STACK**  
 1570\*900\*2180(MM) MAX 150(KG)  
 5.2\*2.9\*7.2(INCH) MAX 331(LB)

MACHINE FOR TRAINING QUADRICEPS

**LYING TRICEP EXTENSION ADJUSTABLE**

A7023 UPPER BODY



**▲ DIMENSIONS** **▣ STACK**  
 1913\*920\*1850(MM) MAX 125(KG)  
 6.3\*3\*6(INCH) MAX 276(LB)

MACHINE FOR TRAINING TRICEPS

**PEC DEC FLY PRO**

A7009 UPPER BODY



**▲ DIMENSIONS** **▣ STACK**  
 1500\*950\*204(MM) MAX 125(KG)  
 4.92\*3.12\*6.7(INCH) MAX 276(LB)

MACHINE FOR TRAINING PECTORALIS, REAR DELTOIDS

**SEATED MULTI PREACHER ARMS CURL PRO**

A7012 UPPER BODY



**▲ DIMENSIONS** **▣ STACK**  
 920\*1260\*1585(MM) MAX 100(KG)  
 3.02\*4.13\*5.2(INCH) MAX 220(LB)

MACHINE FOR TRAINING BICEPS

**HIGH ROW & LOW ROW SUPERSET**

A7008 UPPER BODY



**▲ DIMENSIONS** **▣ STACK**  
 2230\*1370\*161(MM) MAX 125(KG)  
 7.3\*4.5\*5.3(INCH) MAX 276(LB)

MACHINE FOR TRAINING BACK

**SEATED ISO TRICEP EXTENSION**

A7043 UPPER BODY



**▲ DIMENSIONS** **▣ STACK**  
 1720\*940\*1750(MM) MAX 100(KG)  
 5.7\*3.1\*5.7(INCH) MAX 220(LB)

MACHINE FOR TRAINING TRICEPS

STRENGTH - EVOLUTION

STRENGTH - EVOLUTION

STRENGTH - EVOLUTION

STRENGTH - EVOLUTION



# STRENGTH P-loaded



P-loaded follows classic design while incorporating innovative patented technology, support heavyweight training, and perfectly aligned with principles of biomechanics.

Our equipment is built with sturdy and durable materials, providing convenient and flexible usage, ensuring a safer and more efficient workout experience.



POWER RUNNER PRO

A6014 LOWER BODY



**▲ DIMENSIONS**  
1370\*1450\*1440(MM)  
4.5\*4.8\*4.7(INCH)

MACHINE FOR TRAINING GLUTEUS

3D SAFTY SQUAT

A7080 LOWER BODY



**▲ DIMENSIONS**  
1360\*1932\*240(MM)  
4.5\*6.3\*7.9(INCH)

MACHINE FOR TRAINING GLUTEUS, QUADRICEPS, HAMSTRINGS

DOUBLE TRACK SQUAT

A7081 LOWER BODY



**▲ DIMENSIONS**  
2158\*1600\*1930(MM)  
7.1\*5.24\*6.33(INCH)

MACHINE FOR TRAINING QUADRICEPS, HAMSTRINGS

PENDULUM SQUAT PRO

A7049 LOWER BODY



**▲ DIMENSIONS**  
2380\*1280\*1740(MM)  
7.8\*4.2\*5.7(INCH)

MACHINE FOR TRAINING QUADRICEPS, HAMSTRINGS, GLUTEUS

REVERSE HYPER

A6012 LOWER BODY



**▲ DIMENSIONS**  
1650\*1250\*1600(MM)  
5.4\*4.1\*5.2(INCH)

MACHINE FOR TRAINING HAMSTRINGS, GLUTEUS

POWER LEG PRESS

A6017 LOWER BODY



**▲ DIMENSIONS**  
1770\*2146\*1284(MM)  
5.8\*7\*4(INCH)

MACHINE FOR TRAINING CALF MUSCLES

INCLINE PEC DEC FLY

A7017 UPPER BODY



**▲ DIMENSIONS**  
1326\*2242\*1335(MM)  
4.3\*7.4\*4.4(INCH)

MACHINE FOR TRAINING PECTORALIS

INCLINE HIP ABDUCTION

A7029 LOWER BODY



**▲ DIMENSIONS**  
1900\*1480\*1220(MM)  
6.2\*4.9\*4(INCH)

MACHINE FOR TRAINING GLUTEUS

SEATED TRICEPS EXTENSION

A7025 UPPER BODY



**▲ DIMENSIONS**  
1600\*1050\*1600(MM)  
5.2\*3.4\*5.2(INCH)

MACHINE FOR TRAINING TRICEPS

MULTI HACK SQUAT PRO

A7072 LOWER BODY



**▲ DIMENSIONS**  
1770\*2093\*1475(MM)  
5.8\*6.6\*4.8(INCH)

MACHINE FOR TRAINING GLUTEUS, HAMSTRINGS, QUADRICEPS

ABDOMINAL CRUNCH

A6020 CORE



**▲ DIMENSIONS**  
1480\*1090\*1530(MM)  
4.9\*3.6\*5.9(INCH)

MACHINE FOR TRAINING RECTUS ABDOMINIS, OBLIQUUS EXTERNUS ABDOMINIS

ISO SMITH

A7030 UPPER BODY



**▲ DIMENSIONS**  
1336\*2022\*2270(MM)  
4.4\*6.6\*7.4(INCH)

MACHINE FOR TRAINING PECTORALS, BACK, DELTOIDS, TRAPEZIUS

STANDING HIP THRUST

A7026 LOWER BODY



**▲ DIMENSIONS**  
1200\*1000\*1200(MM)  
3.9\*3.3\*4(INCH)

MACHINE FOR TRAINING GLUTEUS

SEATED ROW

A6001 UPPER BODY



**▲ DIMENSIONS**  
1200\*1600\*1300(MM)  
4\*5.3\*4.3(INCH)

MACHINE FOR TRAINING BACK

LEG EXTENSION

A6009 LOWER BODY



**▲ DIMENSIONS**  
1200\*1600\*1300(MM)  
4\*5.3\*4.3(INCH)

MACHINE FOR TRAINING QUADRICEPS

HIP THRUST

A7027 LOWER BODY



**▲ DIMENSIONS**  
1850\*1500\*1200(MM)  
6.1\*4.9\*3.9(INCH)

MACHINE FOR TRAINING GLUTEUS, HAMSTRINGS

BELT SQUAT

A7001 LOWER BODY



**▲ DIMENSIONS**  
1600\*1600\*1655(MM)  
5.2\*5.2\*5.4(INCH)

MACHINE FOR TRAINING GLUTEUS, QUADRICEPS, HAMSTRINGS

SQUAT STATION PRO

A7002 LOWER BODY



**▲ DIMENSIONS**  
1750\*1780\*1090(MM)  
5.7\*5.8\*3.6(INCH)

MACHINE FOR TRAINING GLUTEUS, HAMSTRINGS, QUADRICEPS

STRENGTH - P-LOADED

STRENGTH - P-LOADED

STRENGTH - P-LOADED

STRENGTH - P-LOADED



SEATED REAR DELTOID SHOULDER



LOWER BODY
A7004
DIMENSIONS: 1700\*1340\*1400(MM)
5.6\*4.4\*4.6(INCH)
MACHINE FOR TRAINING UPPER BACK, REAR DELTOIDS, LOWER MIDDLE PART OF TRAPEZIUS

CLASSIC INCLINE CHEST PRESS



UPPER BODY
A7010
DIMENSIONS: 1457\*2354\*1285(MM)
4.8\*7.7\*4.2(INCH)
MACHINE FOR TRAINING UPPER PECTORALIS

CLASSIC PULLOVER



UPPER BODY
A7006
DIMENSIONS: 1720\*1540\*1445(MM)
5.6\*5\*4.7(INCH)
THE MOST RECOMMENDED MACHINE FOR TRAINING LATISSIMUS DORSI BY DORIAN YATES

SEATED LEGS CURL



LOWER BODY
A7018
DIMENSIONS: 1300\*1150\*1150(MM)
4.3\*3.8\*3.89(INCH)
MACHINE FOR TRAINING HAMSTRINGS IN ISOLATION

SUPINE SHOULDER PRESS



UPPER BODY
A7005
DIMENSIONS: 2370\*1340\*1370(MM)
7.8\*4.4\*4.5(INCH)
TRAINING DELTOIDS, REDUCE SPINE AND TRICEPS PRESSURE

CLASSIC ISO LATERAL ROW



UPPER BODY
A7038
DIMENSIONS: 1420\*1050\*1360(MM)
6.3\*3\*5.7(INCH)
MACHINE FOR TRAINING BACK MUSCLE GOUPS

CLASSIC WIDE PULLDOWN



UPPER BODY
A7007
DIMENSIONS: 1700\*1340\*1400(MM)
5.6\*4.4\*4.6(INCH)
MACHINE FOR TRAINING BACK

CLASSIC SEATED CHEST PRESS



UPPER BODY
A7011
DIMENSIONS: 1455.6\*1891\*1434(MM)
4.8\*6.2\*4.7(INCH)
MACHINE FOR TRAINING PECTORALIS

SEATED TRICEPS OVERHEAD EXTENTION



UPPER BODY
A7013
DIMENSIONS: 1326\*2139\*1520(MM)
4.3\*7\*5(INCH)
MACHINE FOR TRAINING TRICEPS

CLASSIC SEATED LONG ROW



UPPER BODY
A7036
DIMENSIONS: 1930\*920\*1750(MM)
6.3\*3\*5.7(INCH)
MACHINE FOR TRAINING LATISSIMUS DORSI

MULTI FRONT ROW PRO



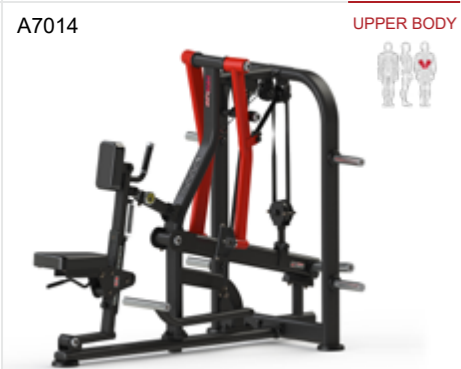
UPPER BODY
A7040
DIMENSIONS: 1810\*1184\*1930(MM)
6\*3.9\*6.3(INCH)
MACHINE FOR TRAINING BACK

MILITARY SHOULDER PRESS PRO



UPPER BODY
A7042
DIMENSIONS: 1670\*2050\*1580(MM)
5.5\*6.7\*5.2(INCH)
MACHINE FOR TRAINING DELTOIDS

SEATED ISO LOW ROW



UPPER BODY
A7014
DIMENSIONS: 1760\*1340\*1410(MM)
5.8\*4.4\*4.6(INCH)
MACHINE FOR TRAINING MIDDLE AND LOWER LATISSIMUS DORSI

SEATED MULTI HIGH ROW



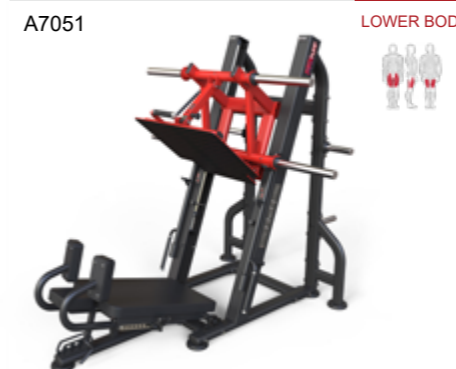
UPPER BODY
A7015
DIMENSIONS: 2250\*1340\*2010(MM)
7.4\*4.4\*6.6(INCH)
MACHINE FOR TRAINING LATISSIMUS DORSI, REAR DELTOIDS

VERTICAL LEG PRESS



LOWER BODY
A7016
DIMENSIONS: 1523\*1580\*1985(MM)
5\*5.2\*6.5(INCH)
MACHINE FOR TRAINING HAMSTRINGS, QUADRICEPS

70 DEGREES LEG PRESS



LOWER BODY
A7051
DIMENSIONS: 2210\*1730\*1780(MM)
7.2\*5.7\*5.8(INCH)
MACHINE FOR TRAINING QUADRICEPS, HAMSTRINGS

MULTI SHOULDER PRESS PRO



UPPER BODY
A7060
DIMENSIONS: 1760\*1130\*1530(MM)
5.8\*3.7\*5(INCH)
MACHINE FOR TRAINING DELTOIDS

STANDING TRICEP EXTENSION & DIP



UPPER BODY
A7061
DIMENSIONS: 2125\*980\*1420(MM)
7\*3.2\*4.6(INCH)
MACHINE FOR TRAINING TRICEPS AND PECTORALIS



ISO BENCH PRESS PRO



**▲ DIMENSIONS**  
1300\*1730\*1200(MM)  
4.3\*5.7\*4(INCH)

MACHINE FOR TRAINING PECTORALS

LAT PULLDOWN & LONG ROW SUPERSET



**▲ DIMENSIONS**  
2280\*1560\*2325(MM)  
7.5\*5.1\*7.6(INCH)

MACHINE FOR TRAINING BACK

MULTI LOW ROW & DEADLIFT



**▲ DIMENSIONS**  
1760\*1350\*1465(MM)  
5.8\*4.4\*4.8(INCH)

MACHINE FOR TRAINING BACK

VIKING PRESS



**▲ DIMENSIONS**  
1810\*1712\*1930(MM)  
5.9\*5.6\*6.3(INCH)

BASE ON GROUND TO TRAIN YOUR SHOULDER WITH HIGER STABILITY

MULTI DEADLIFT & SHRUG



**▲ DIMENSIONS**  
1760\*1350\*1465(MM)  
5.8\*4.4\*4.8(INCH)

MACHINE FOR TRAINING LOWER BACK, TRAPEZIUS

CROSSOVER MULTI SHOULDER PRESS



**▲ DIMENSIONS**  
1665\*1842\*1500(MM)  
5.5\*6\*4.9(INCH)

MACHINE FOR TRAINING DELTOIDS

CROSSOVER MULTI BENCH PRESS



**▲ DIMENSIONS**  
1685\*1860\*820(MM)  
5.5\*6.1\*2.7(INCH)

MACHINE FOR TRAINING PECTORALIS

CROSSOVER MULTI INCLINE PRESS



**▲ DIMENSIONS**  
1800\*1842\*995(MM)  
5.9\*6\*3.3(INCH)

MACHINE FOR TRAINING UPPER PECTORALIS

SUPPORTED ANGLE ROW



**▲ DIMENSIONS**  
1870\*1372\*1350(MM)  
6.13\*4.5\*4.4(INCH)

INNOVATIVE BACK ROW TRAINER

SEATED MIDDLE ROW



**▲ DIMENSIONS**  
1410\*2180\*2050(MM)  
4.6\*7.2\*6.7(INCH)

ADVANCED BIOMECHANICS



STRENGTH - P-LOADED

STRENGTH - P-LOADED

STRENGTH - P-LOADED



# STRENGTH Elite



Elite is designed for individuals of various ages and training levels, perfectly aligned with principles of biomechanics to ensure safe training.

Combining innovation and advanced technology, the Elite series offers unique and cutting-edge training products, providing you with the ultimate fitness experience.

Unlock Your Elite Potential



**SEATED LEG EXTENSION & CURL COMBO**



**▲ DIMENSIONS** 1300\*1150\*1620(MM)  
4.3\*3.8\*5.3(INCH)  
**▣ STACK** MAX 100(KG)  
MAX 220(LB)

MACHINE FOR TRAINING QUADRICEPS, HAMSTRINGS

**SHOULDER PRESS & CHEST PRESS COMBO**



**▲ DIMENSIONS** 1900\*1320\*1620(MM)  
6.2\*4.3\*5.3(INCH)  
**▣ STACK** MAX 100(KG)  
MAX 220(LB)

MACHINE FOR TRAINING DELTOIDS AND PECTORALIS

**LEG CURL & EXTENSION COMBO**



**▲ DIMENSIONS** 1900\*1320\*1620(MM)  
6.2\*4.3\*5.3(INCH)  
**▣ STACK** MAX 100(KG)  
MAX 220(LB)

MACHINE FOR TRAINING QUADRICEPS, HAMSTRINGS

**SHOULDER PRESS**



**▲ DIMENSIONS** 1320\*1600\*1620(MM)  
4.3\*5.2\*5.3(INCH)  
**▣ STACK** MAX 100(KG)  
MAX 220(LB)

MACHINE FOR TRAINING DELTOIDS, TRICEPS

**SEATED ROW**



**▲ DIMENSIONS** 780\*1300\*1950(MM)  
2.6\*4.3\*6.4(INCH)  
**▣ STACK** MAX 100(KG)  
MAX 220(LB)

MACHINE FOR TRAINING TRAPEZIUS, LATISSIMUS DORSI

**SEATED DIP**



**▲ DIMENSIONS** 1110\*1300\*1620(MM)  
3.6\*4.3\*5.3(INCH)  
**▣ STACK** MAX 100(KG)  
MAX 220(LB)

MACHINE FOR TRAINING FOR PECTORALIS, DELTOIDS, TRICEPS

**LAT PULLDOWN & SEATED ROW COMBO**



**▲ DIMENSIONS** 1935\*1230\*2230(MM)  
6.3\*4.3\*7.3(INCH)  
**▣ STACK** MAX 100(KG)  
MAX 220(LB)

MACHINE FOR TRAINING BACK MUSCLE GROUPS

**ARMS CURL & EXTENSION COMBO**



**▲ DIMENSIONS** 1300\*1250\*1620(MM)  
4.3\*4.1\*5.3(INCH)  
**▣ STACK** MAX 75(KG)  
MAX 165(LB)

MACHINE FOR TRAINING BICEPS AND TRICEPS

**ABDOMINAL & LOWER BACK EXTENSION COMBO**



**▲ DIMENSIONS** 1250\*1100\*1620(MM)  
4.1\*3.6\*5.3(INCH)  
**▣ STACK** MAX 75(KG)  
MAX 165(LB)

MACHINE FOR TRAINING ABS, LOWER BACK

**GLUTE HAM**



**▲ DIMENSIONS** 980\*1160\*1620(MM)  
3.2\*3.8\*5.3(INCH)  
**▣ STACK** MAX 75(KG)  
MAX 165(LB)

MACHINE FOR TRAINING GLUTEUS, ADDUCTOR

**SEATED LEG PRESS**



**▲ DIMENSIONS** 1060\*1520\*1820(MM)  
3.5\*5\*6(INCH)  
**▣ STACK** MAX 100(KG)  
MAX 220(LB)

MACHINE FOR TRAINING QUADRICEPS, GLUTEUS, GASTROCNEMIUS, CALVES

**LEG EXTENTION**



**▲ DIMENSIONS** 980\*1200\*1620(MM)  
3.2\*3.9\*5.3(INCH)  
**▣ STACK** MAX 100(KG)  
MAX 220(LB)

MACHINE FOR TRAINING QUADRICEPS

**SEATED CHEST PRESS**



**▲ DIMENSIONS** 1400\*1450\*1620(MM)  
4.6\*4.8\*5.3(INCH)  
**▣ STACK** MAX 100(KG)  
MAX 220(LB)

MACHINE FOR TRAINING PECTORALIS, DELTOIDS, TRICEPS

**ABDOMINAL**



**▲ DIMENSIONS** 1015\*980\*1620(MM)  
4.6\*4.8\*5.3(INCH)  
**▣ STACK** MAX 75(KG)  
MAX 165(LB)

MACHINE FOR TRAINING ABDOMINALS

**LAT PULLDOWN (HIGH FULLY)**



**▲ DIMENSIONS** 1000\*1450\*2280(MM)  
3.3\*4.8\*7.5(INCH)  
**▣ STACK** MAX 100(KG)  
MAX 220(LB)

MACHINE FOR TRAINING TRAPEZIUS, LATISSIMUS DORSI, SACROSPINOUS

**LEG CURL**



**▲ DIMENSIONS** 950\*1780\*1620(MM)  
3.1\*5.8\*5.3(INCH)  
**▣ STACK** MAX 100(KG)  
MAX 220(LB)

MACHINE FOR TRAINING HAMSTRINGS

**ARM CURL BICEPS**



**▲ DIMENSIONS** 1090\*1170\*1620(MM)  
3.6\*3.8\*5.3(INCH)  
**▣ STACK** MAX 75(KG)  
MAX 165(LB)

MACHINE FOR TRAINING BICEPS, BRACHIORADLALIS

**HIP ADDUCTION / ABDUCTION COMBO**



**▲ DIMENSIONS** 1450\*1700\*1620(MM)  
4.8\*5.6\*5.3(INCH)  
**▣ STACK** MAX 75(KG)  
MAX 165(LB)

MACHINE FOR TRAINING GLUTEUS, ADDUCTOR



PEC DECK FLY WITH REVERSE



**▲ DIMENSIONS** 1300\*1300\*2030(MM)  
4.3\*4.3\*6.7(INCH)

**▲ STACK** MAX 100(KG)  
MAX 220(LB)

MACHINE FOR TRAINING PECTORALIS, REAR DELTOIDS

CHIN-UP, DIP ASSIST



**▲ DIMENSIONS** 1300\*1300\*2030(MM)  
4.3\*4.3\*6.7(INCH)

**▲ STACK** MAX 100(KG)  
MAX 220(LB)

MACHINE FOR TRAINING BACK, DELTOIDS

ROTARY TORSO



**▲ DIMENSIONS** 960\*1170\*2100(MM)  
3.1\*3.8\*6.9(INCH)

**▲ STACK** MAX 75(KG)  
MAX 165(LB)

MACHINE FOR TRAINING EXTERNAL OBLIQUE ABDOMINAL MUSCLE

3 STATION CABLE



**▲ DIMENSIONS** 1570\*2200\*2350(MM)  
5.1\*7.2\*7.7(INCH)

EFFECTIVE WHOLE-BODY WORK-OUT BECOME POSSIBLE

THE CAGE 8 STATION (2 PULL DOWN, 2 ROW)



**▲ DIMENSIONS** 5780\*4290\*2350(MM)  
19\*14\*7.7(INCH)

ALLOWS FOR ALMOST ENDLESS STRENGTH TRAINING OPTIONS TO BUILD BALANCE, STABILITY AND STRENGTH.

MULTI FUNCTIONAL TRAINER



**▲ DIMENSIONS** 2400\*950\*2250(MM)  
7.9\*3\*7.4(INCH)

EFFECTIVE WHOLE-BODY UNLIMITED WORK-OUT BECOME POSSIBLE

LATERAL RAISE



**▲ DIMENSIONS** 1175\*1195\*1620(MM)  
3.9\*4\*5.3(INCH)

**▲ STACK** MAX 75(KG)  
MAX 165(LB)

MACHINE FOR TRAINING DELTOIDS

STANDING CALF RAISE



**▲ DIMENSIONS** 780\*1320\*1750(MM)  
2.6\*4.3\*5.7(INCH)

**▲ STACK** MAX 100(KG)  
MAX 220(LB)

MACHINE FOR TRAINING QUADRICEPS, GLUTEUS, GASTROCNEMIUS

CABLE CROSS OVER

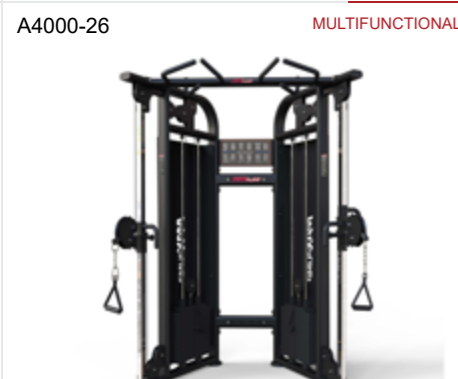


**▲ DIMENSIONS** 1080\*3500\*2220(MM)  
3.5\*11\*7.3(INCH)

**▲ STACK** MAX 100\*2(KG)  
MAX 220\*2(LB)

MUTIPLE GRIPS (ACCESSORIES)

DUAL PULLY



**▲ DIMENSIONS** 750\*1600\*2260(MM)  
2.5\*5.2\*7.4(INCH)

**▲ STACK** MAX 100\*2(KG)  
MAX 220\*2(LB)

VARIOUS GRIPS (ACCESSORIES)

MULTI GYM PRO (8STATION)



**▲ DIMENSIONS** 4000\*6000\*2350(MM)  
13\*19.7\*7.7(INCH)

**▲ STACK** MAX 100\*8(KG)  
MAX 220\*8(LB)

COMBINATION OF LEG EXTENSION, PEC DEC FLY, LEG CURL, LAT PULLDOWN, PULLDOWN, CHIN-UP, LONG ROW

FOREARM TRAINER



**▲ DIMENSIONS** 1268\*800\*1020(MM)  
4.2\*2.6\*3.3(INCH)

MACHINE FOR TRAINING FOREARMS



STRENGTH - ELITE

STRENGTH - ELITE

STRENGTH - ELITE



# STRENGTH BENCH & RACKS

We carefully select premium bearings, paint, and steel, with some parts up to 100mm thick, use advanced laser-cutting and super fiber cushions to provide you with stable and reliable training equipment.

We are committed to creating the perfect fitness experience, allowing you to enjoy both comfort and effectiveness during your workouts.



Unlock Your Elite Potential



HALF RACK

A4000-55 MULTIFUNCTIONAL



**▲ DIMENSIONS**  
1370\*1720\*2270(MM)  
4.5\*5.6\*7.4(INCH)

USING IT TOGETHER WITH THE AUXILIARY EQUIPMENT

GHD 90°ROMAN CHAIR

A4000-56 LOWER BODY



**▲ DIMENSIONS**  
1650\*930\*1140(MM)  
5.4\*3\*3.7(INCH)

MACHINE FOR TRAINING SACROSPINOUS MUSCLE, GLUTEUS , HAMSTRINGS

SMITH 2000

A4000-27(P-SM20) MULTIFUNCTIONAL



**▲ DIMENSIONS**  
1400\*2000\*2020(MM)  
4.6\*6.6\*6.62(INCH)

USING IT TOGETHER WITH THE AUXILIARY EQUIPMENT

SIT UP

A4000-34 CORE



**▲ DIMENSIONS**  
1550\*700\*1190(MM)  
5.1\*2.3\*3.9(INCH)

MACHINE FOR TRAINING ABDOMINAL , EXTERNAL OBLIQUE MUSCLES

ADJUSTABLE DECILNE BENCH

A4000-34A CORE



**▲ DIMENSIONS**  
1710\*530\*950(MM)  
5.6\*1.7\*3(INCH)

MACHINE FOR TRAINING ABDOMINAL, EXTERNAL OBLIQUE MUSCLES

TWIST DOUBLE

A4000-53(F-TD) CORE



**▲ DIMENSIONS**  
1480\*585\*1270(MM)  
4.9\*1.9\*4.2(INCH)

MACHINE FOR TRAINING ABDOMINAL, EXTERNAL OBLIQUE MUSCLES

OLYMPIC BENCH

A4000-30(F-OB) UPPER BODY



**▲ DIMENSIONS**  
1750\*1600\*1060(MM)  
5.7\*5.2\*3.5(INCH)

MACHINE FOR TRAINING DELTOIDS, PECTORALIS, TRICEPS

OLYMPIC BENCH

A4000-30A UPPER BODY



**▲ DIMENSIONS**  
1750\*1600\*1060(MM)  
5.7\*5.2\*3.5(INCH)

MACHINE FOR TRAINING DELTOIDS, PECTORALIS, TRICEPS

OLYMPIC INCLINE BENCH

A4000-31 (F-OIB) UPPER BODY



**▲ DIMENSIONS**  
1700\*1650\*1350(MM)  
5.6\*5.4\*4.4(INCH)

MACHINE FOR TRAINING DELTOIDS, PECTORALIS, TRICEPS

FLAT BENCH

A4000-35 (F-FB) MULTIFUNCTIONAL



**▲ DIMENSIONS**  
1250\*700\*430(MM)  
4.1\*2.3\*1.4(INCH)

AUXILIARY BENCH FOR MULTIPLE EXERCISES

ROMAN CHAIR (45-90° ADJUST TYPE)

A4000-36 UPPER BODY



**▲ DIMENSIONS**  
1100\*840\*750(MM)  
3.6\*2.8\*2.5(INCH)

MACHINE FOR TRAINING SACROSPINOUS MUSCLE

PREACHER CURL BENCH (STAND TYPE)

A4000-37A UPPER BODY



**▲ DIMENSIONS**  
1022\*1792\*1115(MM)  
3.4\*5.9\*3.7(INCH)

MACHINE FOR TRAINING BICEPS, BRACHIORADIALIS

OLYMPIC DECLINE BENCH

A4000-32 (F-ODB) UPPER BODY



**▲ DIMENSIONS**  
2160\*1710\*1140(MM)  
7\*5.6\*3.7(INCH)

MACHINE FOR TRAINING DELTOIDS, PECTORALIS, TRICEPS

UTILITY BENCH

A4000-33A MULTIFUNCTIONAL



**▲ DIMENSIONS**  
1350\*875\*750(MM)  
4.4\*2.9\*2.5(INCH)

AUXILIARY BENCH FOR VARIOUS EXERCISES

ADJUSTABLE INCILNE BENCH

A4000-33F MULTIFUNCTIONAL



**▲ DIMENSIONS**  
1500\*650\*1300(MM)  
4.9\*2.1\*4.3(INCH)

CAN BE USED ALONE AS AN INSTRUMENT FOR INSTRUMENT FOR OTHER EQUIPMENT

PREACHER CURL BENCH

A4000-37 UPPER BODY



**▲ DIMENSIONS**  
805\*1070\*1030(MM)  
2.6\*3.5\*3.4(INCH)

MACHINE FOR TRAINING BICEPS, BRACHIORADIALIS

UTILITY BENCH

A4000-38 (F-UB) MULTIFUNCTIONAL



**▲ DIMENSIONS**  
1200\*500\*1050(MM)  
3.9\*1.64\*3.4(INCH)

AUXILIARY BENCH FOR MULTIPLE EXERCISES

T-BAR ROW

A4000-39(P-TR) UPPER BODY



**▲ DIMENSIONS**  
1840\*800\*1070(MM)  
6\*2.6\*3.5(INCH)

MACHINE FOR TRAINING TRAPEZIUS, LATISSIMUS DORSI, SACROSPINOUS



V-BAR ROW

A4000-39A UPPER BODY



**▲ DIMENSIONS**  
1690\*830\*970(MM)  
5.5\*2.7\*3.2(INCH)  
MACHINE FOR TRAINING TRAPEZIUS, LATISSIMUS DORSI, SACROSPINOUS

3D SMITH

A4000-40 MULTIFUNCTIONAL



**▲ DIMENSIONS**  
1600\*2000\*2065(MM)  
5.2\*6.6\*6.8(INCH)  
COMBINATION OF POWER RACKS AND SMITH

SMITH + HALF RACK

A4000-40A MULTIFUNCTIONAL



**▲ DIMENSIONS**  
2050\*2180\*2200(MM)  
6.7\*7.2\*7.21(INCH)  
COMBINATION OF POWER RACKS AND SMITH

SQUAT RACK

A4000-46 LOWER BODY



**▲ DIMENSIONS**  
1550\*1750\*1680(MM)  
5\*5.7\*5.5(INCH)  
MACHINE FOR TRAINING QUADRICEPS AND HAMSTRINGS

SEATED CALF RAISE

A4000-47 (F-SCR) LOWER BODY



**▲ DIMENSIONS**  
1400\*600\*1550(MM)  
4.6\*1.9\*4.9(INCH)  
MACHINE FOR TRAINING GASTROINTESTINAL MUSCLE

PLATE INCLINE BENCH

A4000-48 UPPER BODY



**▲ DIMENSIONS**  
1920\*1280\*1240(MM)  
6.3\*4.2\*4(INCH)  
MACHINE FOR TRAINING PECTORALIS

FIXED BARBELL RACK

A4000-42(F-FBR) MULTIFUNCTIONAL



**▲ DIMENSIONS**  
910\*880\*1580(MM)  
3\*2.9\*5.2(INCH)  
LASER PROCESSING PRODUCT  
PRECISION MANUFACTURE OF  
ADVANCED STEEL MATERIALS

DISCS RACK

A4000-43(F-DR) MULTIFUNCTIONAL



**▲ DIMENSIONS**  
600\*650\*1400(MM)  
2\*2.1\*4.6(INCH)  
LASER PROCESSING PRODUCT  
PRECISION MANUFACTURE OF  
ADVANCED STEEL MATERIALS

DUMBBELL RACK (LOW TYPE)

A4000-44(F-DBR-2) MULTIFUNCTIONAL



**▲ DIMENSIONS**  
600\*2400\*950(MM)  
1.9\*7.9\*3.1(INCH)  
LASER PROCESSING PRODUCT  
PRECISION MANUFACTURE OF  
ADVANCED STEEL MATERIALS

PLATE FLAT BENCH

A4000-48A UPPER BODY



**▲ DIMENSIONS**  
1800\*1300\*1060(MM)  
5.9\*4.3\*3.5(INCH)  
MACHINE FOR TRAINING PECTORALIS

PLATE DECLINE BENCH

A4000-48B UPPER BODY



**▲ DIMENSIONS**  
2175\*1230\*1030(MM)  
7.1\*4\*3.4(INCH)  
MACHINE FOR TRAINING LOWER PECTORALIS

POWER RACK

A4000-49(F-PR) MULTIFUNCTIONAL



**▲ DIMENSIONS**  
1720\*1725\*2310(MM)  
5.6\*5.7\*7.5(INCH)  
SAFE MOVEMENT OF VARIOUS  
AREAS USING THE WEIGHT OF  
THE BARBELL PLATES

DUMBBELL RACK (BASIC TYPE)

A4000-44A(F-DBR-1) MULTIFUNCTIONAL



**▲ DIMENSIONS**  
850\*2400\*950(MM)  
2.8\*7.9\*3.1(INCH)  
LASER PROCESSING PRODUCT  
PRECISION MANUFACTURE OF  
ADVANCED STEEL MATERIALS

VERTICLE DUMBBELL RACK

A4000-44B MULTIFUNCTIONAL



**▲ DIMENSIONS**  
600\*650\*1200(MM)  
1.9\*2.1\*3.9(INCH)  
LASER PROCESSING PRODUCT  
PRECISION MANUFACTURE OF  
ADVANCED STEEL MATERIALS

DIP & LEG RAISE

A4000-45 (F-DLR) UPPER BODY



**▲ DIMENSIONS**  
1500\*650\*1600(MM)  
4.9\*2.1\*5.2(INCH)  
MACHINE FOR TRAINING  
ABDOMINALS

HANDLE RACK PRO

A4000-50 (F-HDRP) MULTIFUNCTIONAL



**▲ DIMENSIONS**  
1190\*780\*1365(MM)  
3.9\*2.55\*4.5(INCH)  
LASER PROCESSING PRODUCT  
PRECISION MANUFACTURE OF  
ADVANCED STEEL MATERIALS

HANDLE RACK

A4000-50A MULTIFUNCTIONAL



**▲ DIMENSIONS**  
540\*570\*770(MM)  
1.7\*1.9\*2.5(INCH)  
LASER PROCESSING PRODUCT  
PRECISION MANUFACTURE OF  
ADVANCED STEEL MATERIALS

BARBELL RACK (STAND TYPE)

A4000-51 MULTIFUNCTIONAL



**▲ DIMENSIONS**  
1245\*560\*245(MM)  
4.1\*1.8\*0.8(INCH)  
LASER PROCESSING PRODUCT  
PRECISION MANUFACTURE OF  
ADVANCED STEEL MATERIALS

STRENGTH - BENCH & RACKS

STRENGTH - BENCH & RACKS

STRENGTH - BENCH & RACKS

STRENGTH - BENCH & RACKS



STRENGTH - BENCH & RACKS

**BENTOVER LATERAL RAISE**

A4000-52

UPPER BODY



**▲ DIMENSIONS**  
1765\*750\*1000(MM)  
5.8\*2.5\*3.3(INCH)

MACHINE FOR TRAINING DELTOIDS

**MOVING LEG RAISE**

A4000-54

CORE



**▲ DIMENSIONS**  
1075\*690\*1420(MM)  
3.5\*2.3\*4.7(INCH)

MACHINE FOR TRAINING ABDOMINAL

**SAFETY FLAT BENCH**

A4070

UPPER BODY



**▲ DIMENSIONS**  
1750\*1600\*1060(MM)  
5.7\*5.2\*3.5(INCH)

MACHINE FOR TRAINING DELTOIDS, PECTORALIS, TRICEPS

**SAFETY INCLINE BENCH**

A4071

UPPER BODY



**▲ DIMENSIONS**  
1700\*1650\*1350(MM)  
5.6\*5.4\*4.4(INCH)

MACHINE FOR TRAINING DELTOIDS, PECTORALIS, TRICEPS

**SAFETY WITH PIVOT SHOULDER PRESS BENCH**

A7055

UPPER BODY



**▲ DIMENSIONS**  
1815\*1712\*1930(MM)  
5.9\*5.6\*6.3(INCH)

MACHINE FOR TRAINING DELTOIDS FROM LIGHT TO HEAVY WEIGHTS

**SAFETY WITH PIVOT INCLINE BENCH**

A7056

UPPER BODY



**▲ DIMENSIONS**  
1620\*1740\*1550(MM)  
5.3\*5.7\*5(INCH)

MACHINE FOR TRAINING DELTOIDS, PECTORALIS, TRICEPS

**MILITARY BENCH PRO**

A7057

UPPER BODY



**▲ DIMENSIONS**  
1400\*1680\*1880(MM)  
4.6\*5.5\*6.2(INCH)

THE EQUIPMENT ALLOWS TRAINERS TO DO BASIC EXERCISE FOR UPPER BODY

STRENGTH - BENCH & RACKS





**MAXPUMP**

DESIGNED FOR ELITE ATHLETES

# GLUTEMAX

POWERED BY MAXPUMP

Glute  
Training  
zone  
Equipments.





MULTI REVERSE GLUTE HAM

A7058 LOWER BODY



**▲ DIMENSIONS**  
1630\*1840\*905(MM)  
5.3\*6\*2.9(INCH)

ENHANCING LOWER BODY STRENGTH AND POWER GLUTE

ROTATING HIP THRUST

A7059 LOWER BODY



**▲ DIMENSIONS**  
1775\*1380\*1045(MM)  
5.8\*4.5\*2.9(INCH)

ENHANCING LOWER BODY STRENGTH AND POWER

MULTI HIP

A7063 LOWER BODY



**▲ DIMENSIONS**  
1140\*1070\*161(MM)  
3.7\*3.5\*5.3(INCH)

ENHANCING LOWER BODY STRENGTH AND POWER

POWER SQUAT

A7073 LOWER BODY



**▲ DIMENSIONS**  
2200\*1460\*160(MM)  
7.2\*4.8\*5.2(INCH)

ENHANCING LOWER BODY STRENGTH AND POWER

MAX GLUTE KICKBACK PRO

A7074 LOWER BODY



**▲ DIMENSIONS**  
1660\*1370\*219(MM)  
5.4\*4.5\*7.2(INCH)

ENHANCING LOWER BODY STRENGTH AND POWER

HEAVY DUTY LUNGE PRO

A7075 LOWER BODY



**▲ DIMENSIONS**  
2180\*1700\*185(MM)  
7.1\*5.6\*6.1(INCH)

ENHANCING LOWER BODY STRENGTH AND POWER

STANDING ABDUCTOR

A7065 LOWER BODY



**▲ DIMENSIONS**  
1835\*1310\*1415(MM)  
6\*4.3\*4.6(INCH)

ENHANCING LOWER BODY STRENGTH AND POWER

GLUTE ISOLATOR PRO

A7066 LOWER BODY



**▲ DIMENSIONS**  
1600\*1200\*190(MM)  
5.2\*3.9\*6.2(INCH)

ENHANCING LOWER BODY STRENGTH AND POWER

ARC GLUTE KICKBACK/GLUTE COASTER

A7067 LOWER BODY



**▲ DIMENSIONS**  
1810\*1060\*1980(MM)  
5.9\*3.4\*6.5(INCH)

ENHANCING LOWER BODY STRENGTH AND POWER

POWER RUNNER PRO

A6014 LOWER BODY



**▲ DIMENSIONS**  
1370\*1450\*1440(MM)  
4.5\*4.8\*4.7(INCH)

MACHINE FOR TRAINING GLUTEUS

INCLINE HIP ABDUCTION

A7029 LOWER BODY



**▲ DIMENSIONS**  
1900\*1480\*1220(MM)  
6.2\*4.9\*4(INCH)

MACHINE FOR TRAINING GLUTEUS

STANDING HIP THRUST

A7026 LOWER BODY



**▲ DIMENSIONS**  
1200\*1000\*1200(MM)  
3.9\*3.3\*4(INCH)

MACHINE FOR TRAINING GLUTEUS

HIP PRESS

A7068 LOWER BODY



**▲ DIMENSIONS**  
1970\*1610\*168(MM)  
6.5\*5.3\*5.5(INCH)

ENHANCING LOWER BODY STRENGTH AND POWER

HIP THRUST RACK

A7069 LOWER BODY



**▲ DIMENSIONS**  
1710\*1620\*930(MM)  
5.6\*5.3\*3(INCH)

ENHANCING LOWER BODY STRENGTH AND POWER

MULTI LUNGE

A7070 LOWER BODY



**▲ DIMENSIONS**  
1390\*1650\*960(MM)  
4.6\*5.4\*3.1(INCH)

ENHANCING LOWER BODY STRENGTH AND POWER

REVERSE HYPER

A6012 LOWER BODY



**▲ DIMENSIONS**  
1650\*1250\*1600(MM)  
5.4\*4.1\*5.2(INCH)

MACHINE FOR TRAINING HAMSTRINGS, GLUTEUS

HIP THRUST

A7027 LOWER BODY



**▲ DIMENSIONS**  
1850\*1500\*1200(MM)  
6.1\*4.9\*3.9(INCH)

MACHINE FOR TRAINING GLUTEUS, HAMSTRINGS

BELT SQUAT

A7001 LOWER BODY



**▲ DIMENSIONS**  
1600\*1600\*1655(MM)  
5.2\*5.2\*5.4(INCH)

MACHINE FOR TRAINING GLUTEUS, QUADRICEPS, HAMSTRINGS



SQUAT STATION PRO

A7002

LOWER BODY



**▲ DIMENSIONS**  
1750\*1780\*1090(MM)  
5.7\*5.8\*3.6(INCH)

MACHINE FOR TRAINING  
GLUTEUS, HAMSTRINGS,  
QUADRICEPS

GLUTE HAM

A5007

LOWER BODY



**▲ DIMENSIONS** **■ STACK**  
980\*1160\*1620(MM) MAX 75(KG)  
3.2\*3.8\*5.3(INCH) MAX 165(LB)

MACHINE FOR TRAINING  
GLUTEUS, ADDUCTOR

HIP ADDUCTION /ABDUCTION  
COMBO

A5014

LOWER BODY



**▲ DIMENSIONS** **■ STACK**  
1450\*1700\*1620(MM) MAX 75(KG)  
4.8\*5.6\*5.3(INCH) MAX 165(LB)

MACHINE FOR TRAINING  
GLUTEUS, ADDUCTOR

# GLUTEMAX

POWERED BY MAXPUMP

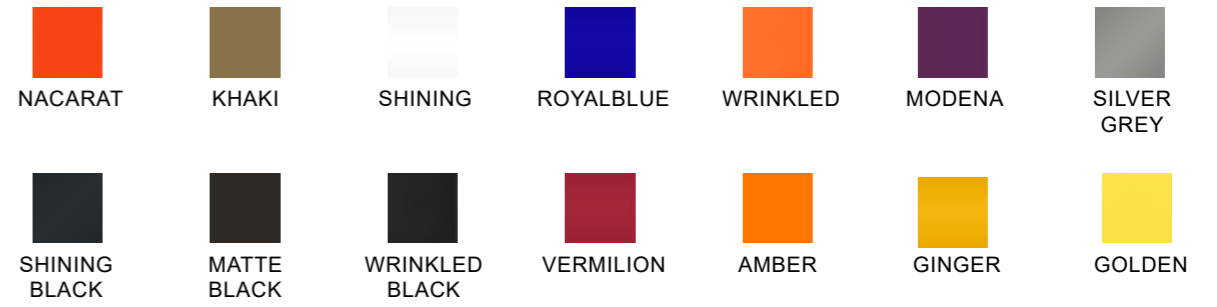




# Frame Colors



## FRAME COLOURS



## PRODUCT COLOR



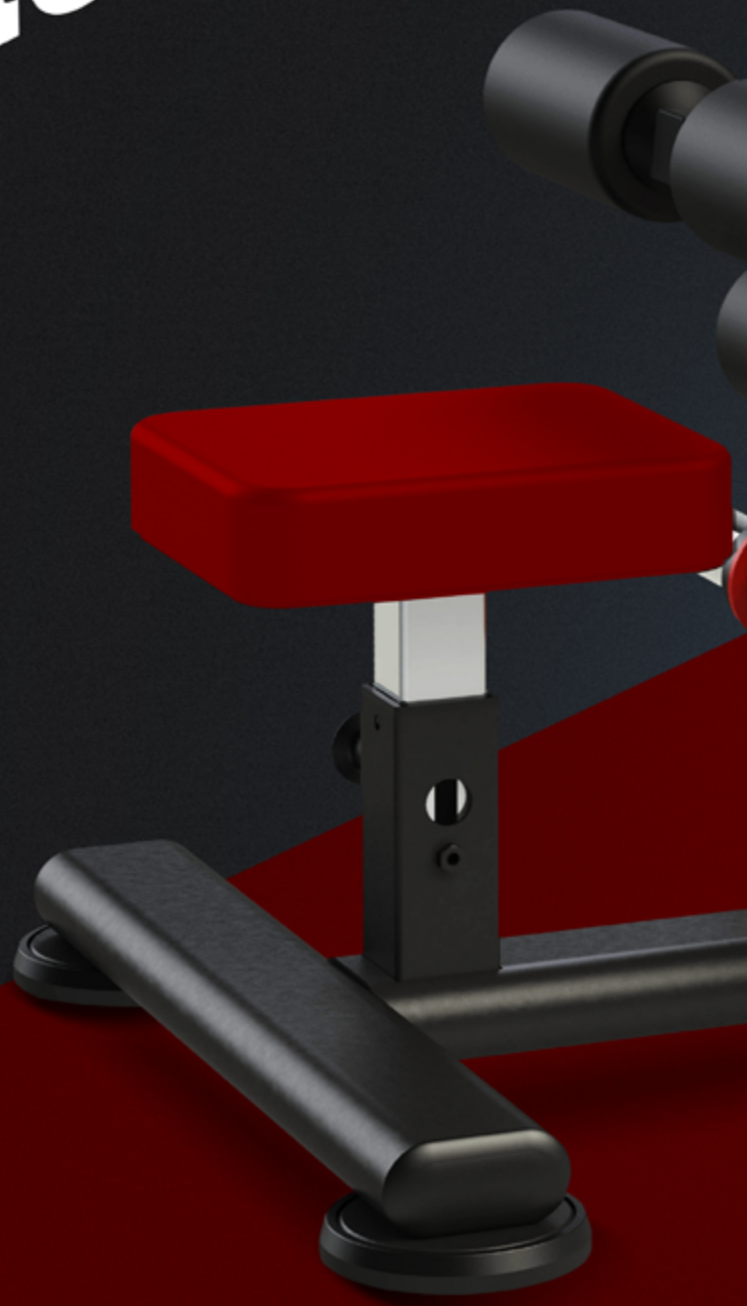
FRAME COLORS

FRAME COLORS

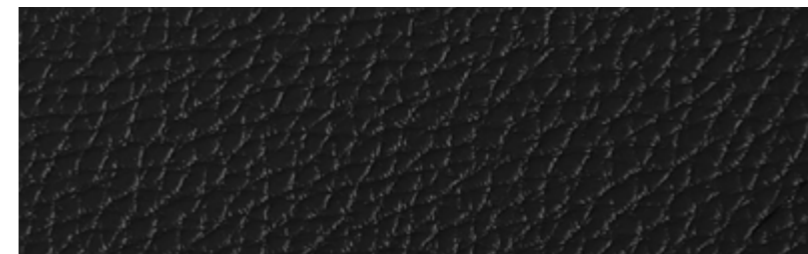
Personalize your upholstery color to make your fitness equipment truly yours.



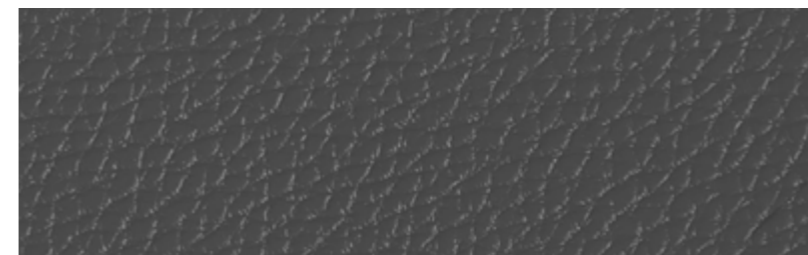
# Upholstery Colors



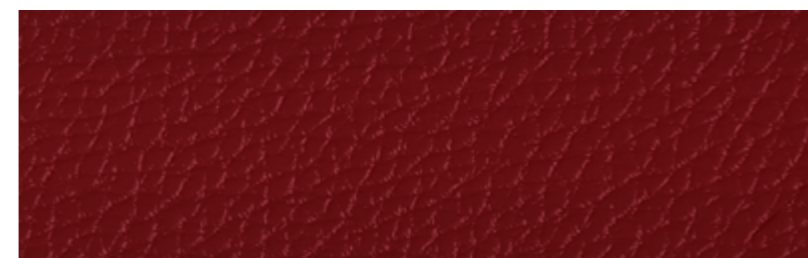
## PRODUCT COLOR



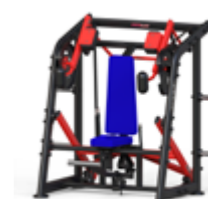
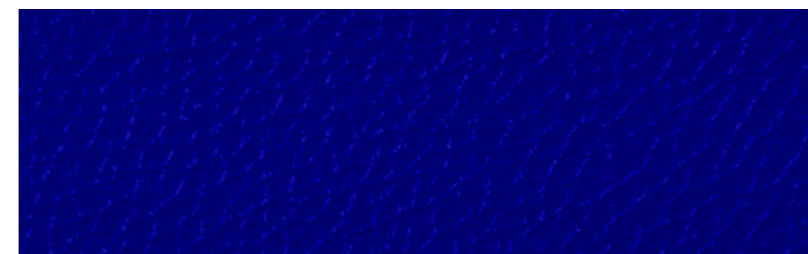
BLACK



GREY



RED



RPYABLUE



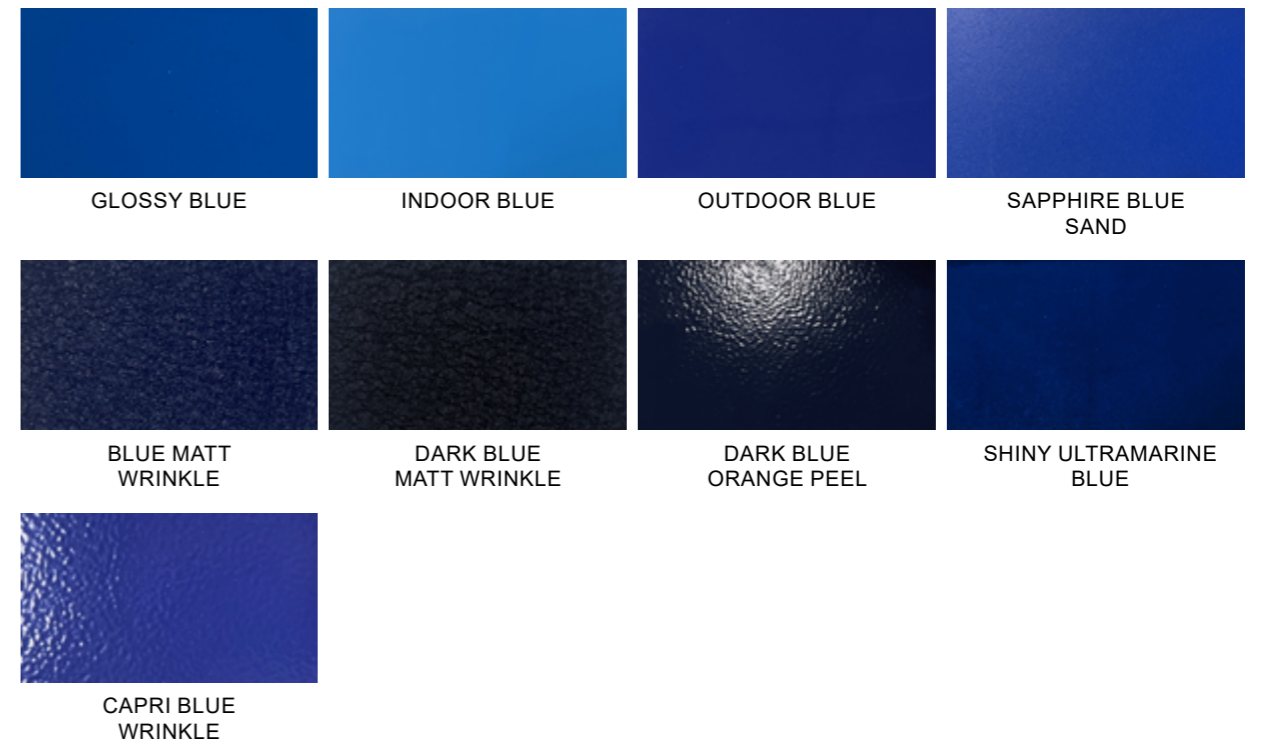
# COLOR CARD



## RED



## BLUE





YELLOW



OUTDOOR YELLOW      YELLOW      COPPER-LIKE CLEAR YELLOW      YELLOW MATT WRINKLE

GREEN



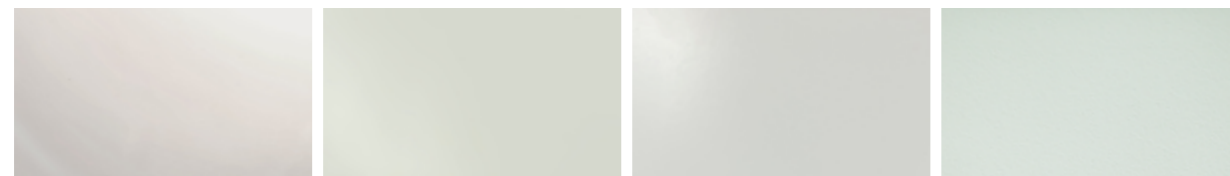
GLOSSY GREEN      FLUORESCENT GREEN      GREEN MATT WRINKLE      GREEN WRINKLE

ORANGE

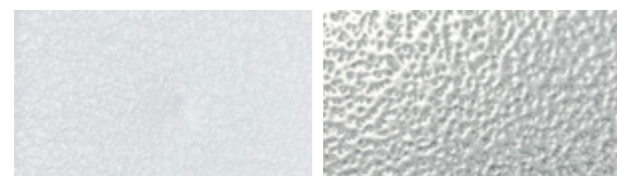


GLOSSY ORANGE      ORANGE      ORANGE SAND      ORANGE WRINKLE

WHITE

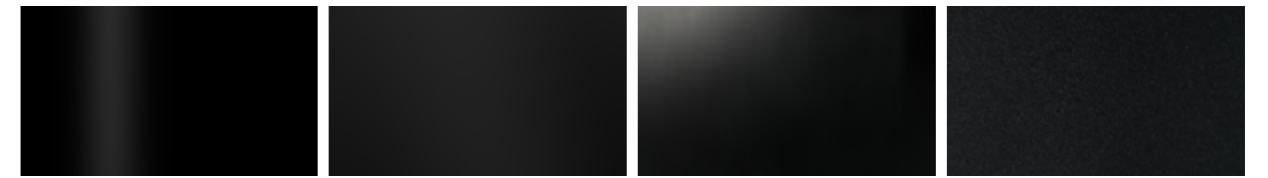


GLOSSY WHITE      WHITE LOW GLOSS      MATT WHITE      WHITE SAND



WHITE MATT WRINKLE      WHITE AND GREY WRINKLE

BLACK



GLOSSY BLACK      BLACK      MATT BLACK      BLACK SAND

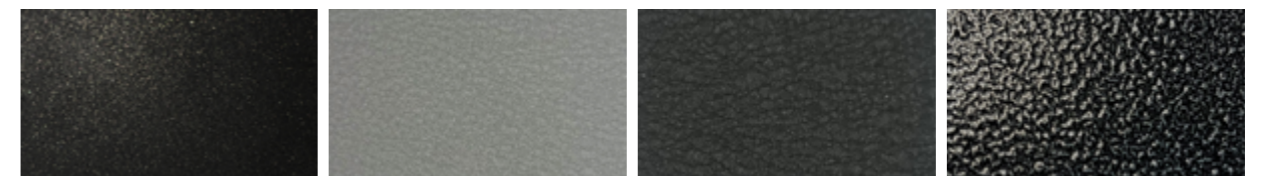


BLACK SAND-L-PA-NJI      LIGHT BLACK MATT WRINKLE      DARK GREY MATT WRINKLE      BLACK ORANGE PEEL

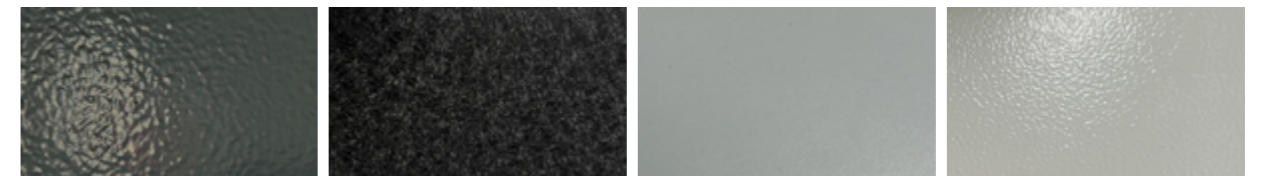


STARRY SKY      SHINY BLACK      BLACK WRINKLE      BLACK MATT WRINKLE

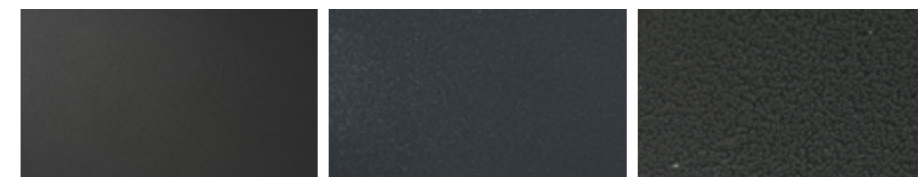
GREY



DARK GREY SAND      LIGHT GREY MATT WRINKLE      GREY MATT WRINKLE      BLACK AND GREY WRINKLE



GREY WRINKLE      MOIRE DARK GREY      GREY SILVER      OUTDOOR GREY WRINKLE



CHAMPAGNE GREY      GREY FLASHY SILVER      COOL GRAY 11C

COLOR CARD

COLOR CARD

COLOR CARD

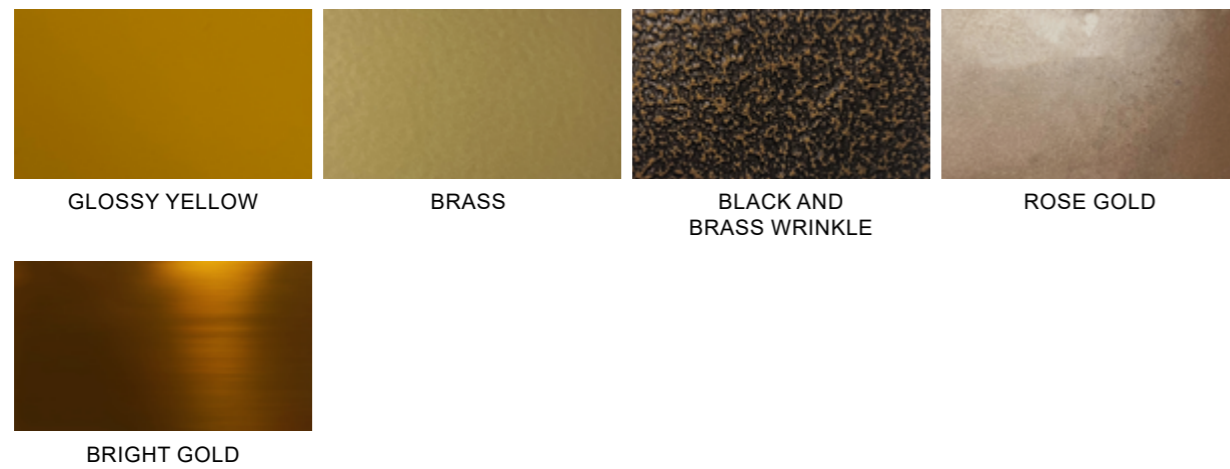
COLOR CARD



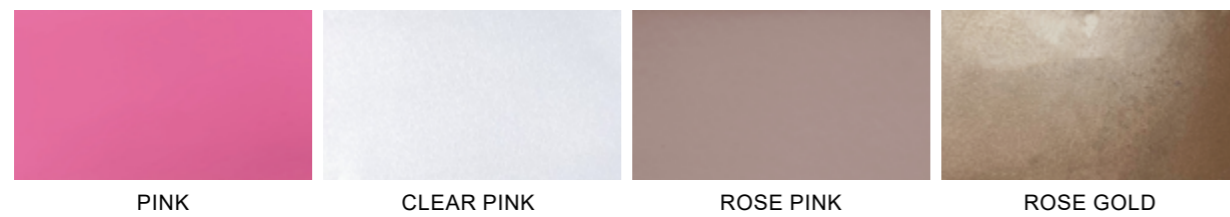
SILVER



GOLD



PINK



PURPLE



COLOR CARD

COLOR CARD

COLOR CARD







**MAXPUMP**  
DESIGNED FOR ELITE ATHLETES

[www.maxpumpsport.com](http://www.maxpumpsport.com)

 MAXPUMPSPORT  
 maxpumpsport

max pump sport llc

 104 south Clark street  
Gallup, NM 87301  
the United States

**Maxpump**  
**ENGINEERED IN USA**

Maxpump's US-designed, ergonomic, and innovative devices ensure efficient and safe training. Elevate your performance with our patented equipment.



**MAXPUMP**  
[www.maxpumpsport.com](http://www.maxpumpsport.com)